



MONTHLY MEMBERSHIP PROGRESS REPORT

District 323 C

Results as of: 5/31/2017

GMT: KAMLESH JAIN

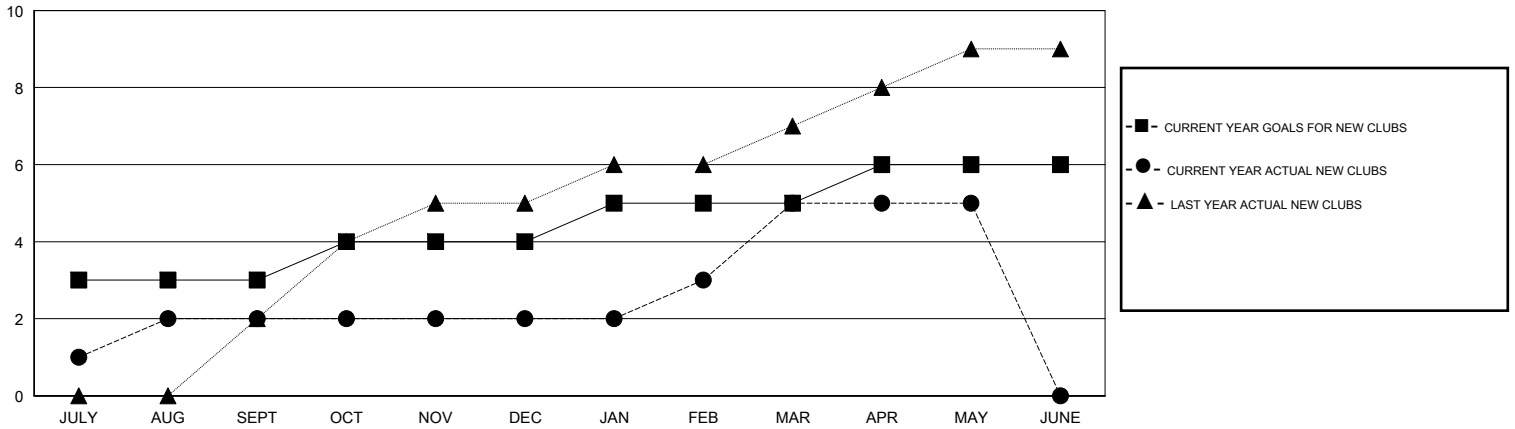
LOCATION INDIA

GMT CA

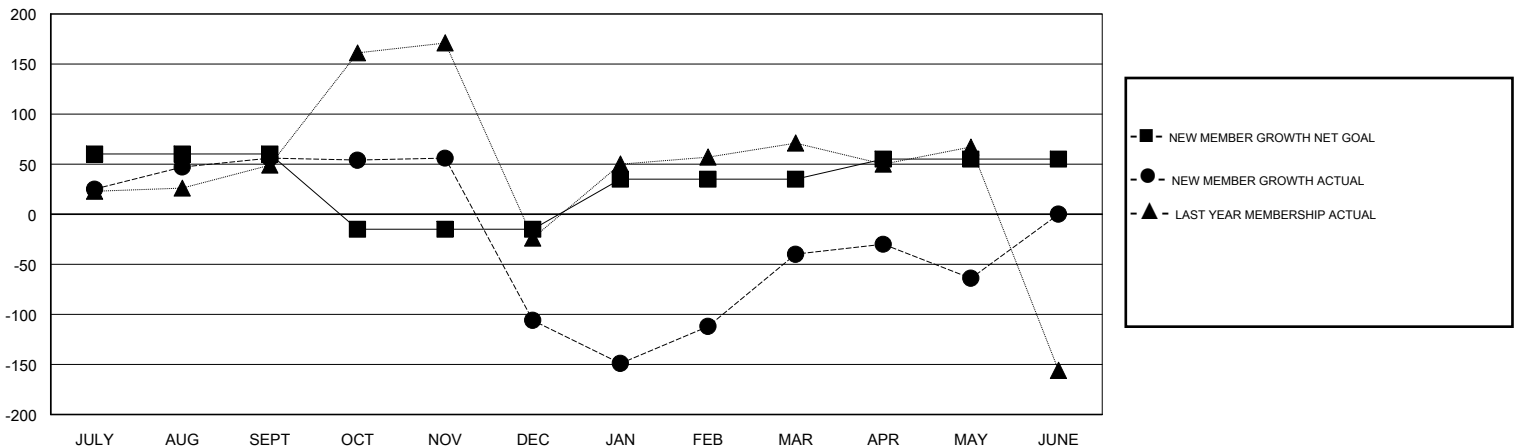
Clubs			
RESULTS FOR 2016-2017			
QUARTER	NEW CLUB GOAL	NEW CLUBS	DROPPED CLUBS
JULY/AUG/SEPT	3	2	0
OCT/NOV/DEC	1	0	7
JAN/FEB/MAR	1	3	4
APR/MAY/JUNE	1	0	0

Members			
RESULTS FOR 2016-2017			
QUARTER	NEW MEMBER GROWTH NET GOAL (not reinstated or transfers)	NEW MEMBER GROWTH ACTUAL (not reinstated or transfers)	DROPPED MEMBERS ACTUAL (including transfers)
JULY/AUG/SEPT	60	113	57
OCT/NOV/DEC	-75	26	188
JAN/FEB/MAR	50	190	124
APR/MAY/JUNE	20	54	78

GOALS AND ACTUAL NEW CLUBS CUMULATIVE



GOALS AND ACTUAL MEMBERS CUMULATIVE



DROPPED CLUBS: 11	59 CLUBS OF 90 ADDED 1 OR MORE NEW MEMBERS	GENDER DISTRIBUTION
		MALE 2,000 (75.64%)
		FEMALE 644 (24.36%)
DROPPED MEMBERS	CLICK HERE FOR CUMULATIVE MEMBERSHIP DATA	TOTAL FAMILY UNIT MEMBERS 575
DECEASED 2		FAMILY MEMBERS PAYING HALF DUES 303
CLUB CANCELLED 211		
OTHER 234		
TOTAL 447		